



DR. MARTIN LUTHER KING, JR. DR. (CENTER STREET)

BARDIN ROAD TO SE GREEN OAKS BOULEVARD

CITY OF ARLINGTON PROJECT NO. PWST19007
WWW.ARLINGTONTX.GOV/CENTERSTREET

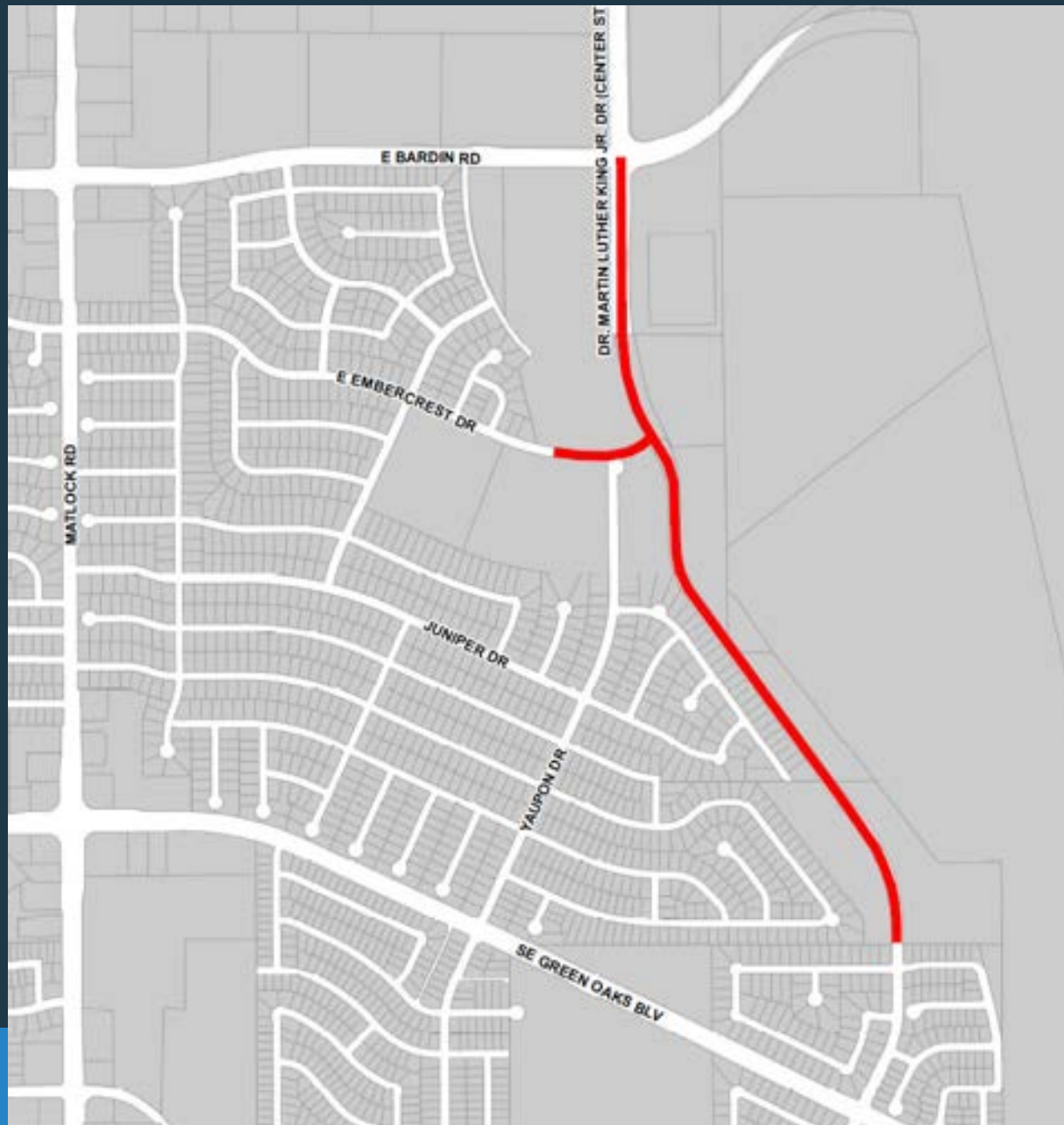
CONSTRUCTION BRIEFING PRESENTATION



PRESENTATION OUTLINE

- Project Location
- Why was Dr. Martin Luther King, Jr. Drive selected?
- Project Scope – Improvements
- Typical Construction Sequencing
- Construction Schedule
- Construction Phasing
- Construction Project Representatives
- What to Expect During Construction
- Contact Information

PROJECT LOCATION



WHY WAS THIS STREET SELECTED?



- Increased Capacity
- Enhanced Regional Mobility
- Congestion Mitigation and Air Quality Initiative
- Funding:
 - Approved by Arlington voters (2014 Bond Election)
 - Funded by: City of Arlington, Tarrant County Commissioners Court through the 2021 Transportation Bond Program, and North Central Texas Council of Governments (NCTCOG) through the Surface Transportation Block Grant
- Aligns with City Council Priorities





PROJECT SCOPE – IMPROVEMENTS

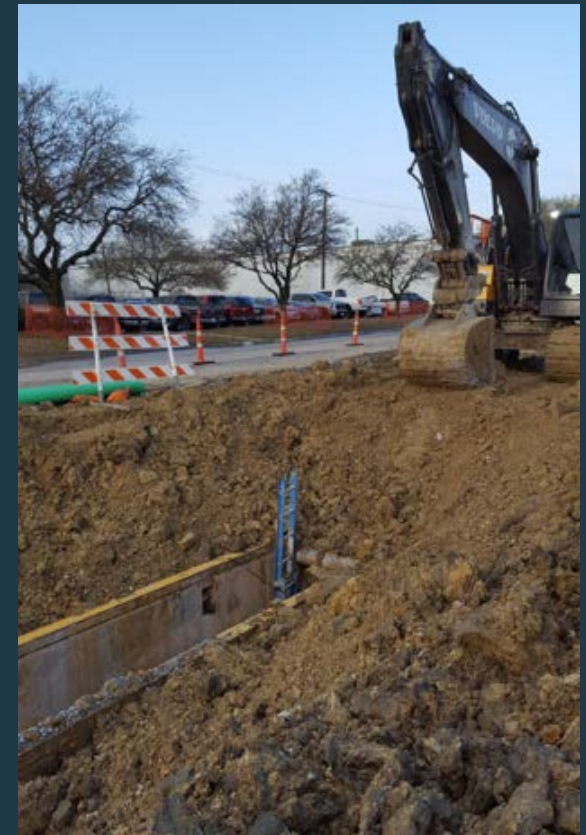
- New 4-lane concrete roadway: Connecting Bardin Road to Engleside Drive, with pavement markings leading to Green Oaks Boulevard
- Additional Improvements:
 - Connection to Embercrest Drive
 - Utility improvements
 - Traffic Signals
 - Streetlights
 - Landscaping and irrigation
 - Shared use trail, sidewalk, and ADA compliant ramps
 - Pavement markings and street signs



PROJECT SCOPE – IMPROVEMENTS

Utility improvements

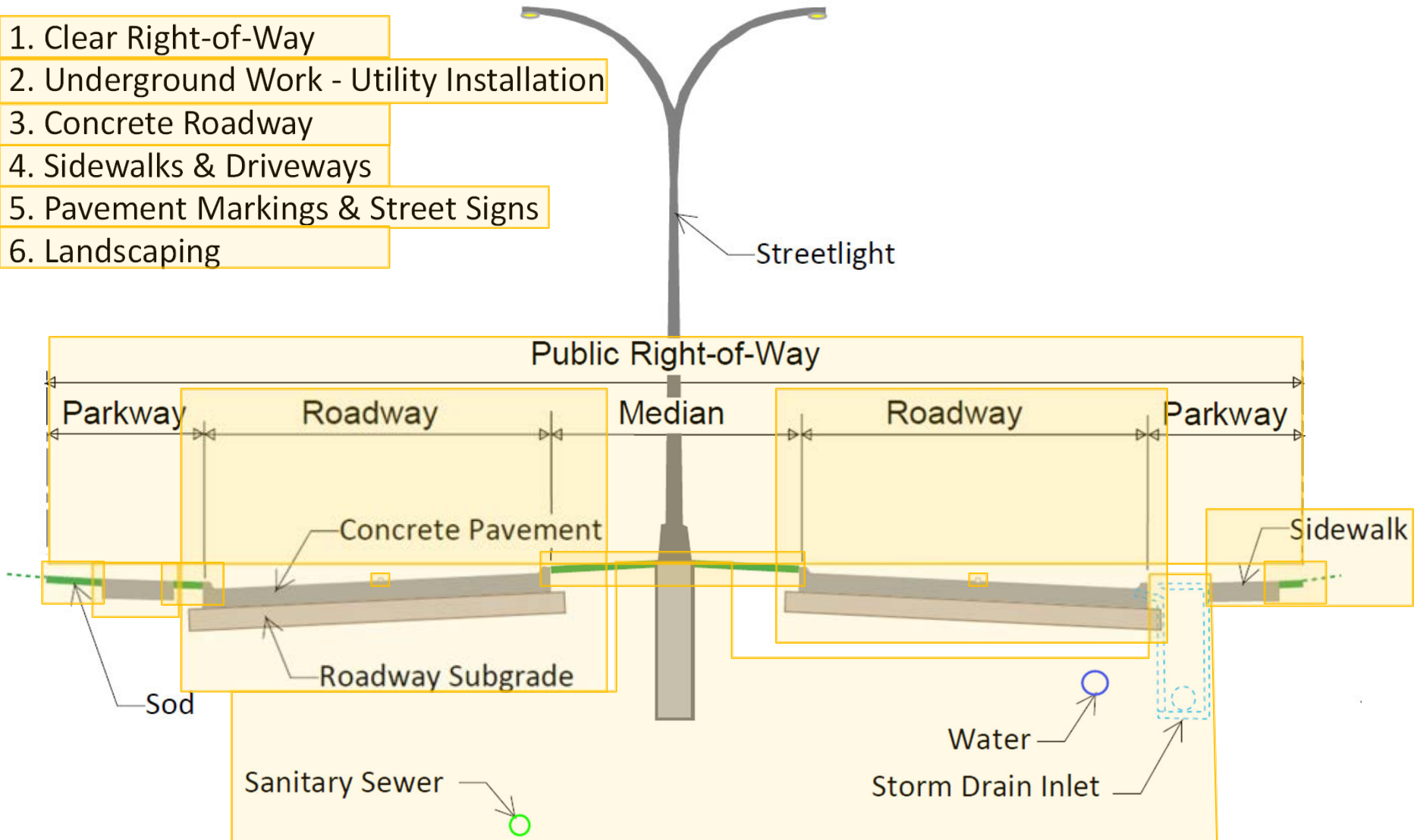
- Sanitary sewer & water line adjustments
- Water line extensions
- Storm drain improvements
 - Storm drain system



TYPICAL CONSTRUCTION SEQUENCING



1. Clear Right-of-Way
2. Underground Work - Utility Installation
3. Concrete Roadway
4. Sidewalks & Driveways
5. Pavement Markings & Street Signs
6. Landscaping



CONSTRUCTION SCHEDULE



Anticipated Construction Schedule

- Start Construction: Jan. 2025
- End Construction: Oct. 2025
- Total Duration: 10 months

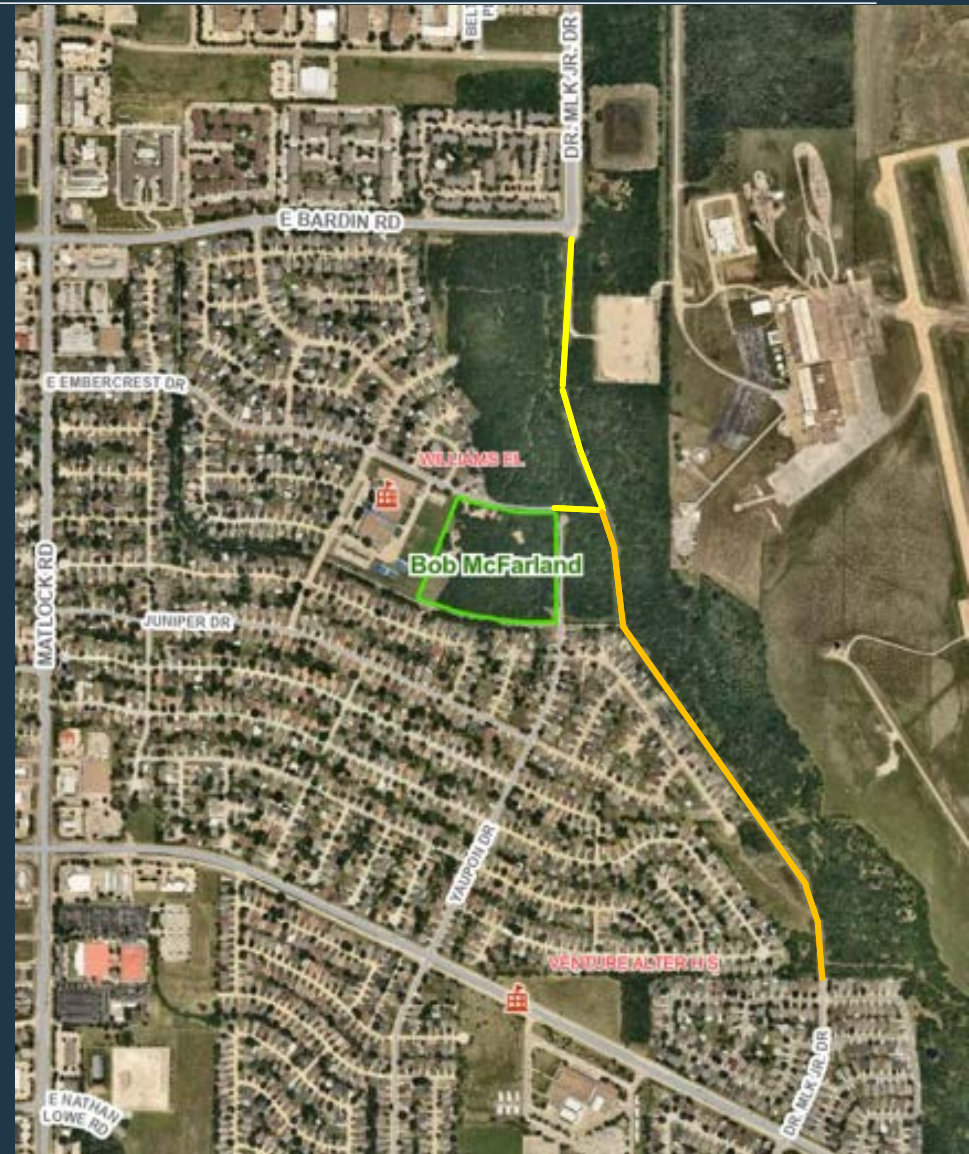
- Contractor can work:
 - Monday-Friday
 - From 7 am to 6 pm (Central Standard Time)
 - From 7 am to 8 pm (Central Daylight Time)
 - Saturday with City approval



CONSTRUCTION PHASING



- Dr. Martin Luther King, Jr. Drive from Bardin Road to Embercrest Drive will be complete and open to local traffic before the rest of the Street.
- Dr. Martin Luther King, Jr. Drive will be fully accessible once construction is complete.



CONSTRUCTION PROJECT REPRESENTATIVES



- Ella Reinert, P.E. - Project Manager, City of Arlington Public Works
- Dylan Rumble – Civil Engineer, City of Arlington Water Utilities
- James Couch - Construction Inspector, City of Arlington Public Works
- Tiseo Paving Company - Construction Contractor



If you have questions or concerns during construction
contact the City at (817) 459-6550



WHAT TO EXPECT DURING CONSTRUCTION

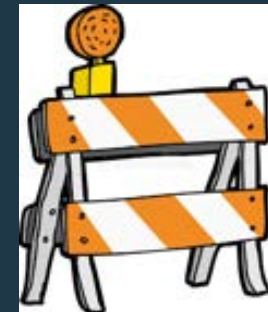


A written notice will be provided a minimum of 48-hours prior to any planned disruptions.



No significant impact to traffic.

Stay alert for construction signage.



CITY OF ARLINGTON PUBLIC WORKS CONTACT INFORMATION



- **Project Manager:**
 - Ella Reinert, P.E.
 - Ella.Reinert@ArlingtonTX.gov
 - Telephone: (817) 459-6354

- **Construction Inspector:**
 - James Couch
 - Telephone: (817) 459-6550



THANK YOU

For project updates, please visit:
www.ArlingtonTX.gov/CenterStreet