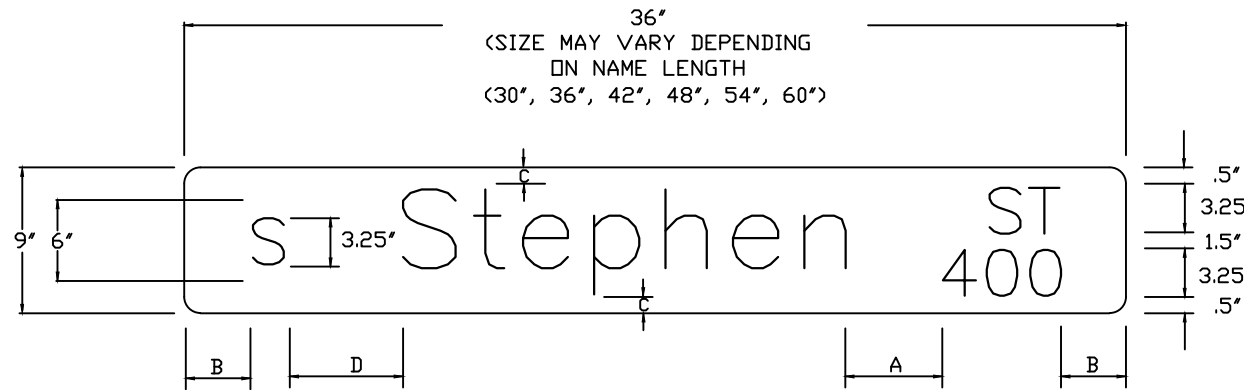


TYPICAL
BREAK AWAY SIGN POST



TYPICAL STREET MARKER BLADE LAYOUT

FABRICATION NOTES:

SIGN BLANK MATERIAL SHALL BE FLAT 0.125" THICK, 5052-H38, ALODINE COATED ALUMINUM SHEETING. THE BLANKS SHALL BE BURR, GREASE, AND DUST FREE AND SHALL NOT BE OF ANY RECYCLED MATERIAL. THE BLANKS SHALL HAVE RADIUS CORNERS PER THE TEXAS M.U.T.C.D. STANDARDS. THE METAL SHALL BE 9" WIDE AND OF APPROPRIATE LENGTH FOR THE NECESSARY WORDING TO BE APPLIED.

CITY WIDE STANDARD

PUBLIC STREET MARKER BLADE-BLUE BACKGROUND/WHITE LETTERS
PRIVATE STREET MARKER BLADE-WHITE BACKGROUND/BLUE LETTERS

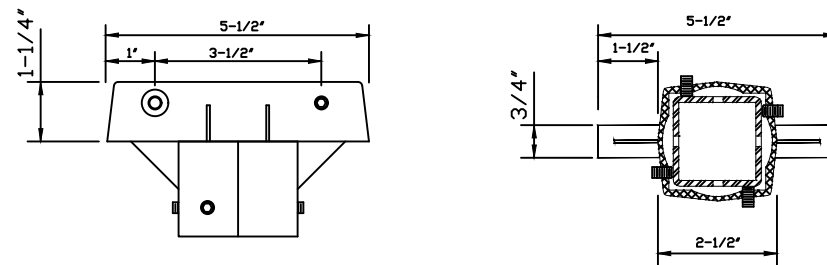
ENTERTAINMENT DISTRICT ONLY

PUBLIC STREET MARKER BLADE-BLACK BACKGROUND/WHITE LETTERS
PRIVATE STREET MARKER BLADE-WHITE BACKGROUND/BLACK LETTERS

SIGN INSTALLATION NOTE:

5/16-18X1/2 HEX CAPS FULL THREAD TAP BOLTS, COARSE, STAINLESS STEEL NUT FOR SIGN BRACKETS SHALL BE USED TO MOUNT ALL OTHER SIGNS, ETC. BENEATH THE STREET MARKER BLADES.

STREET MARKER BLADE ATTACHMENT



UNIVERSAL CAP FOR USE ON ROUND POST AND SQUARE POST

NOTE:

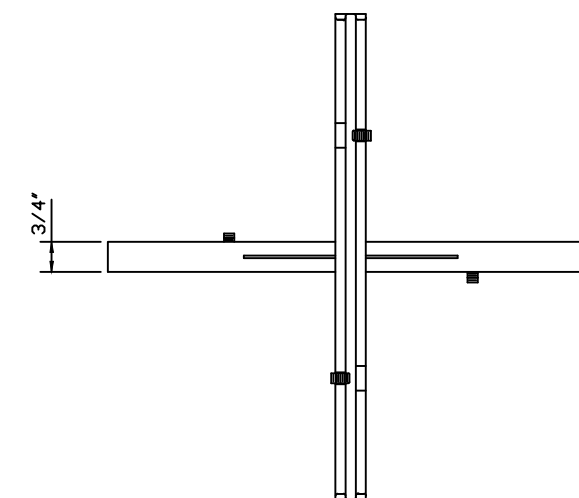
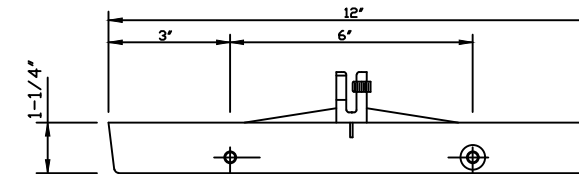
USE INTERCHANGEABLY ON 2-3/8" ROUND CAP AND SQUARE POST. TAP HOLES LOCATED 3/8" FROM THE BASE OF CAP AND 1/2" FROM THE EDGE OF WALL. INCLUDES 4 EA 5/16" SET SCREWS & 2 BOLT THRU FASTENERS,



STAINLESS STEEL NUT FOR SIGN BRACKET

A=NOT LESS THAN 2" OR GREATER THAN 8".
B=NOT LESS THAN 2".
C=NOT LESS THAN 0.5".
D=NOT LESS THAN 2" OR GREATER THAN 3".

FONT SERIES "B"
3M-3930 (762mm x 45.7m) 30" FILM WHITE
3M-1175C (609.5mm x 45.7m) 24" FILM BLUE



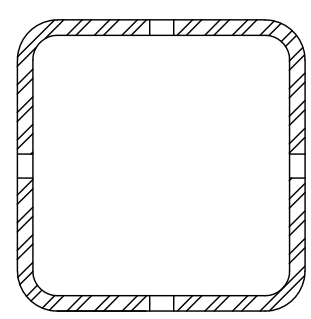
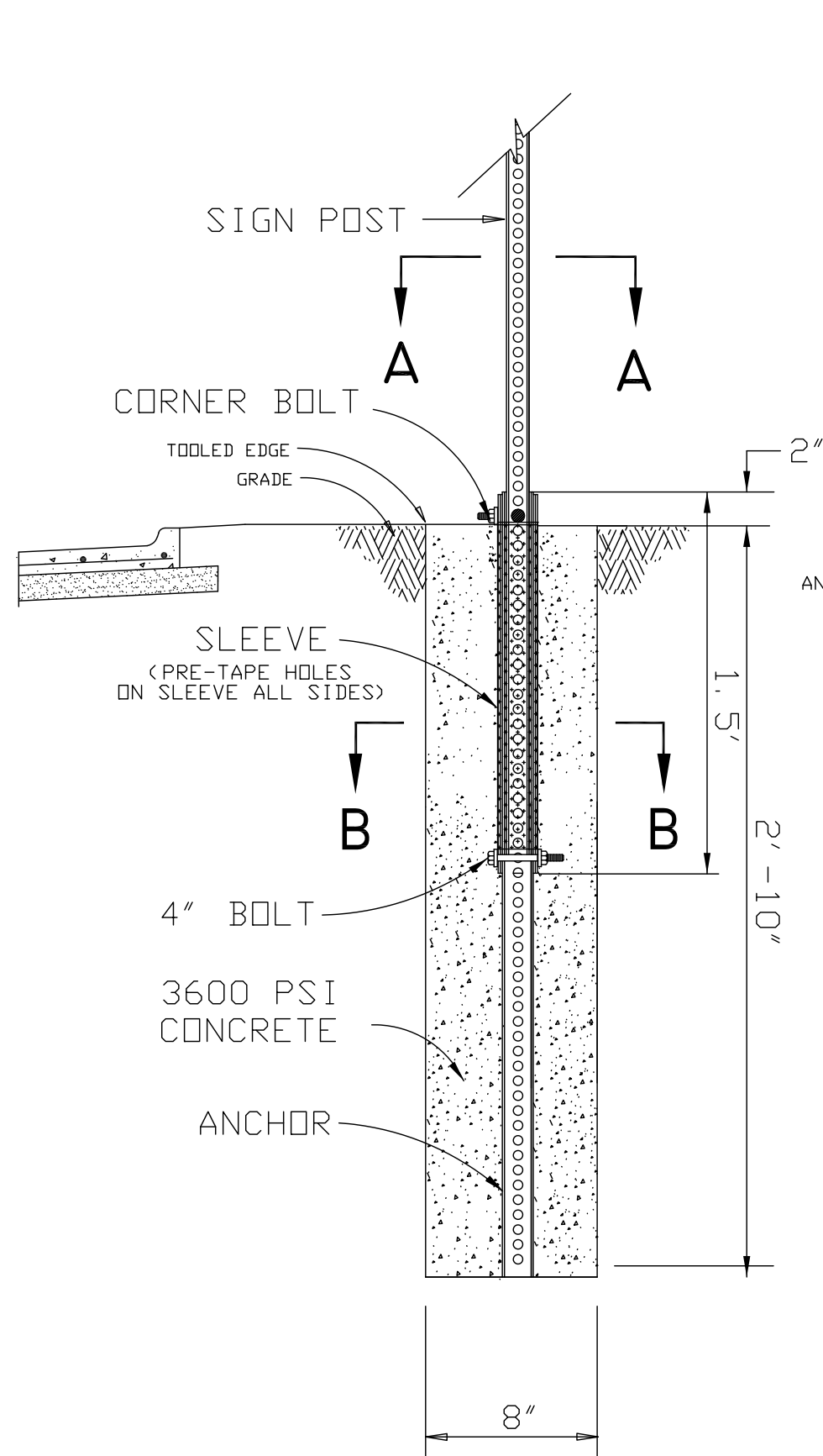
12" 90° CROSS PIECE

CITY OF ARLINGTON
DEPARTMENT OF PUBLIC WORKS
AND TRANSPORTATION

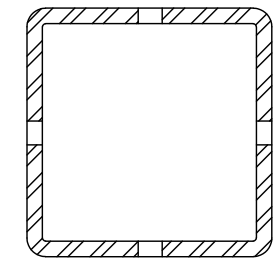


SIGN INSTALLATION POLE
INSTALLATION AND FABRICATION
DETAIL

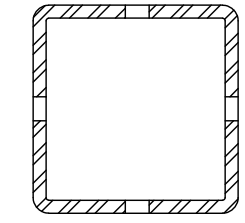
SCALE	REVISION	
NTS	DATE	BY
DRAWN BY JCS	09/07/18	DDL
DATE 06/08/17		
SHEET	1 OF 2	



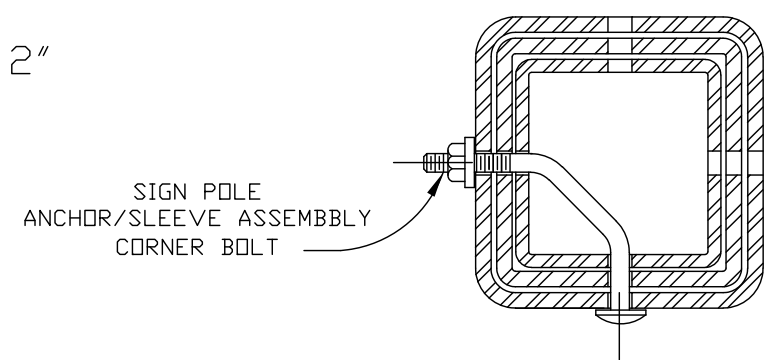
SLEEVE
2.5" SQUARE
BY 1.5' LONG



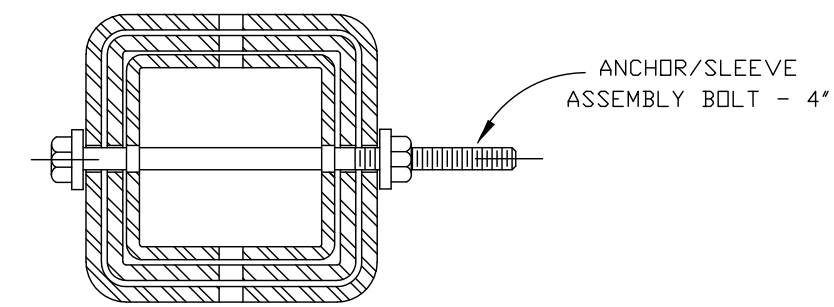
ANCHOR
2.25" SQUARE
BY 3' LONG



POLE
2" SQUARE
BY 12' LONG



SECTION A-A



SECTION B-B

CONSTRUCTION NOTES:

1. ALL SIGN POLES SHALL BE OF TELESCOPING "BREAK-AWAY" DESIGN AND CONFORM TO THE TMTCD REQUIREMENTS.
2. THE POLE ASSEMBLY SHALL CONSIST OF A 14-GAUGE 2"-O.D. SQUARE POLE (OF APPROPRIATE LENGTH FOR THE INSTALLATION OF THE SIGNS NEEDED,) A 12-GAUGE 2-1/4"-O.D. X 3' ANCHOR, AND A 12-GAUGE 2-1/2"-O.D. X 18" SLEEVE.
3. ALL COMPONENTS SHALL CONFORM TO THE STANDARD SPECIFICATIONS FOR HOT ROLLED STEEL STRUCTURAL QUALITY ASTM DESIGNATION A570-79.
4. ALL POSTS AND ANCHOR ASSEMBLIES SHALL CARRY A MINIMUM CERTIFIABLE YIELD STRENGTH OF 60,000 PSI.
5. ALL POST AND ANCHOR ASSEMBLIES SHALL BE MANUFACTURED FROM RAW STEEL, FORMED AND WELDED ON THE CORNER PRIOR TO RECEIVING A TRIPLE COAT PROTECTION OF INLINE HOT DIPPED GALVANIZED ZINC PERAASHTD M-120 (0.8 OZ. PER SQ. FT.) FOLLOWED BY A CHROMATE CONVERSION COATING AND A CROSS-LINKED POLYURETHANE ACRYLIC EXTERIOR COATING. INTERIOR SHALL RECEIVE A DOUBLE COAT OF ZINC BASE ORGANIC COATING, TESTED IN ACCORDANCE WITH ASTM B-117.
6. ALL POLES, SLEEVES, AND INSERTS SHALL HAVE 7/16" DIAMETER DIE PUNCHED HOLES ON 1" CENTERS TRULY ALIGNED IN THE CENTER OF THE SECTION, FOR THE ENTIRE LENGTH OF THE POLE.
7. POLE, SLEEVE, AND INSERT ASSEMBLIES SHALL BE CONNECTED TOGETHER WITH A SINGLE CORNER BOLT SIMILAR TO A UNISTRUT #T1070 CORNER BOLT, OR EQUIVALENT.
8. SIGN ATTACHMENT BOLTS - GALVANIZED - 5/16" X 3" #/WASHERS/NUTS
9. ANCHOR/SLEEVE ASSEMBLY BOLT - GALVANIZED - 5/16" X 4" #/WASHERS/NUT
10. ALL POLES, ANCHORS, SLEEVES, AND CORNER BOLTS SHALL BE "UNISTRUT" OR EQUIVALENT.
11. ALL POLES IN THE ENTERTAINMENT DISTRICT SHALL BE POWDER COATED BLACK.
12. ALL INSTALLATIONS IN THE ENTERTAINMENT DISTRICT SHALL PAINT EXPOSED SLEEVE & ANCHOR BLACK

TYPICAL BREAK AWAY SIGN POST ASSEMBLY

CITY OF ARLINGTON
DEPARTMENT OF PUBLIC WORKS
AND TRANSPORTATION



SIGN
INSTALLATION POLE
AND FABRICATION
DETAIL

SCALE	REVISION	
NTS	DATE	BY
DRAWN BY		
JCS		
DATE		
06/08/17		
SHEET	2 OF 2	