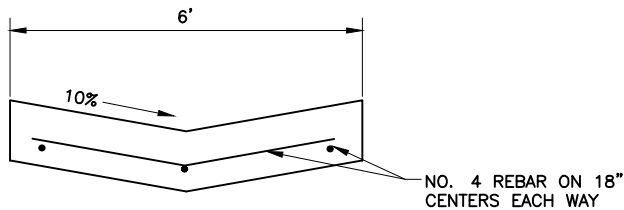


NOTES:

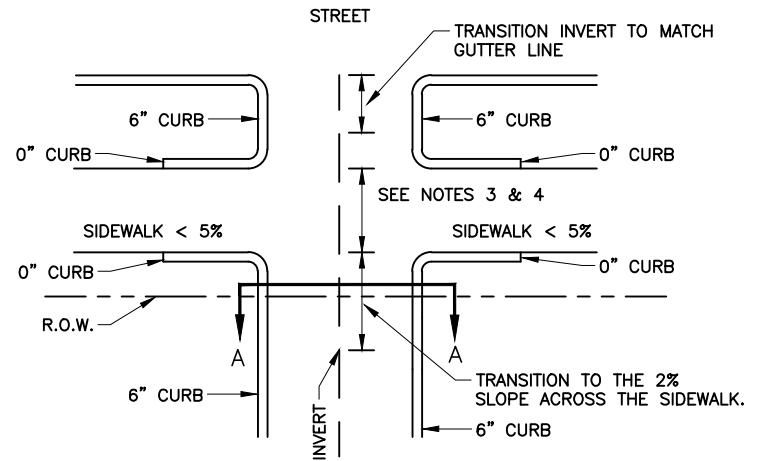
1. FLUME NEEDS TO BE FLARED AT ENTRANCE ONLY FOR HYDRAULIC PURPOSES.
2. BOLLARDS SHALL BE FILLED WITH CONCRETE AND SET IN 18" DIAMETER CONCRETE FOOTING A MINIMUM OF 3' BELOW THE FLUME FLOW LINE. BOLLARD SHALL BE 4' HIGH ABOVE THE FLUME FLOW LINE.

CONCRETE FLUME
NTS



CURBS MAY BE OMITTED AND USE THE VALLEY SECTION WHEN OVERFLOW IS 10 CFS OR LESS OR WHEN FLOW CAN BE CONTAINED WITHIN THE CONCRETE SECTION.

SECTION A - A
ALTERNATE
NTS



NOTE:

1. FLOW IS TOWARD STREET, OTHERWISE THE FLUME WILL HAVE TO BE FLARED AT THE STREET.
2. FOR FLUMES 5 FEET OR LESS IN WIDTH A METAL PLATE MAY BE CONSIDERED FOR UNIQUE SITUATIONS IF AUTHORIZED BY THE PUBLIC WORKS DEPARTMENT.
3. LONGITUDINAL FLUME SLOPE ACROSS SIDEWALK MUST BE NO GREATER THAN 2%
4. THE TRANSVERSE SLOPE OF THE FLUME AT THE SIDEWALK MUST BE LESS THAN 5%

FLUME WITH SIDEWALK CROSSING
NTS REV: 7/25/2017



FLUME WITH SIDEWALK CROSSING

DATE:	SCALE: NTS	SHEET ___ OF ___
DESIGNED BY:	DRAWN BY:	CHECKED BY: