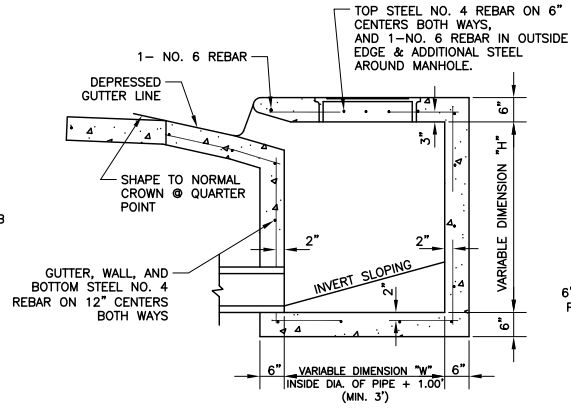
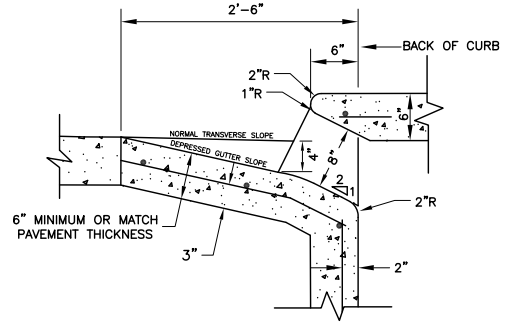


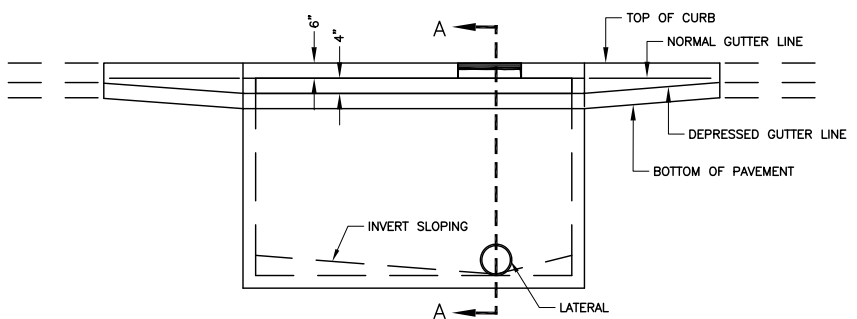
PLAN



SECTION A-A  
CURB INLET  
CROSS SECTION  
NTS

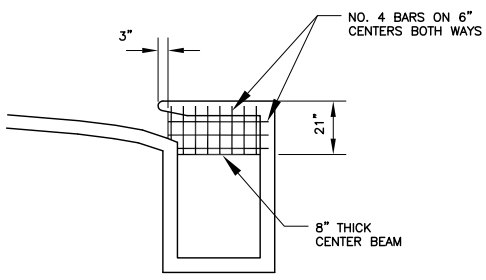


THROAT DETAIL FOR CURB INLET ON  
CONCRETE STREET  
NTS



ELEVATION

CURB INLET  
NTS REV: 7/25/17



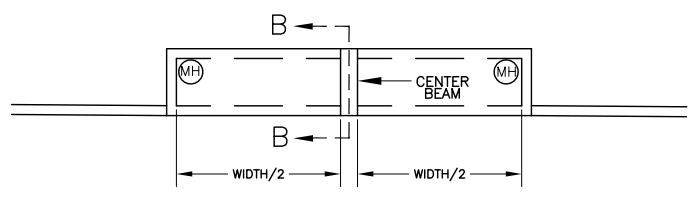
SECTION B-B NOTES:

1. ALL 15' AND 20' INLETS WILL REQUIRE A CENTER SUPPORT BEAM.
2. ALL OPEN BACK INLETS WILL REQUIRE A CENTER BEAM, REGARDLESS OF INLET TYPE OR SIZE.


SECTION B-B  
NTS

NOTES:

1. REINFORCING STEEL SHALL BE NO. 4 REBAR ON 12" CENTERS BOTH WAYS FOR GUTTER, BOTTOM SLAB, ENDS, FRONT AND BACK WALLS, AND NO. 4 REBAR ON 6" CENTERS BOTH WAYS FOR TOP SLAB. AN ADDITIONAL NO. 6 REBAR SHALL BE PLACED IN THE FRONT EDGE OF THE TOP SLAB IN THE INLETS AND ADDITIONAL REINFORCING STEEL SHALL BE PLACED AROUND MANHOLES AS SHOWN.
2. ALL REINFORCING STEEL SHALL BE GRADE 60.
3. ALL CONCRETE SHALL BE CLASS C, 5 1/2 SACK. 3600 PSI.
4. ALL EXPOSED CORNERS SHALL BE CHAMFERED 3/4".
5. ALL REINFORCING STEEL SHALL HAVE A MINIMUM COVER OF 2".
6. ALL BACKFILLING SHALL BE PERFORMED BY MECHANICAL TAMPING TO 95% DENSITY PER ASTM D698.
7. IF MODIFYING AN INLET, I.E. CREATING AN OPEN BACK INLET, THE TOP SHALL BE REMOVED AND RECONSTRUCTED.
8. LOCATION OF MANHOLE OPENING TO BE AT OUTFALL END.
9. ALL 15' AND 20' INLETS WILL REQUIRE TWO MANHOLES ONLY IF THE INSIDE HEIGHT (UNDER THE CENTER BEAM) IS LESS THAN FOUR FEET.
10. LIGHT BROOM FINISH ON ALL SURFACES.
11. PRECAST INLETS SHALL NOT BE ALLOWED.
12. STEPS ARE REQUIRED UNDER ALL MANHOLES FOR CURB INLETS WITH A DEPTH OF 4 FEET OR GREATER (\*SEE NON-CORROSIVE STEP DETAIL).
13. NON-TRAFFIC RATED MANHOLE LID SHALL BE USED UNLESS OTHERWISE SPECIFIED. (\*SEE STORM DRAIN MANHOLE COVER & FRAME DETAIL)



CENTER BEAM FOR 15' AND 20'  
INLETS  
NTS

 CITY OF ARLINGTON, TEXAS		
<b>CURB INLET</b>		
DATE:	SCALE: NTS	SHEET ___ OF ___
DESIGNED BY:	DRAWN BY:	CHECKED BY: