

ENHANCING REGIONAL MOBILITY

Q3 UPDATE FY2014



VOLUME 2, ISSUE 3

IN THIS ISSUE

- Page 1
Handitran Seeks Funding
- Page 2
Airport Development Plan
- Page 3
Current and Upcoming Construction in 2014
- Page 4-5
Project Map
- Page 6
2014 Proposed and Completed Construction
2014 Street Maintenance
- Page 7
MAX Rider Survey
2014 Bond Election & Mobility
- Page 8
New Bike Facilities in Arlington

HANDITRAN SEARCHES FOR SUSTAINABLE FUNDING

Since 1980, City of Arlington Handitran has been providing trips to work, medical appointments, other essential services, and recreation for elderly and disabled citizens who cannot drive or have no other access to transportation. Providing over 120,000 rides each year, Handitran makes critical connections for these residents, helping them live more independently.

Funding for Handitran's capital and operational needs has historically come from a combination of federal, state, and City funds. Recent changes in federal legislation; however, have eliminated over \$650,000 dollars in Federal Transit Administration funding for operations, including fuel, chemicals, supplies, and - most importantly - people. Bus drivers, schedulers, dispatchers and administration staff comprise the bulk of Handitran's expense, and without them the program cannot operate. While federal funds for capital expenses such as bus replacements, contracted taxi service, and preventative maintenance have not been cut, these capital funds cannot be used for operational expenses.

The City of Arlington is working with our federal congressional representatives as well as state and local officials to identify long term, sustainable funding for operational needs. While long term service changes may be needed to offset the operational funding loss, Handitran continues working to maintain and improve a highly efficient transit service for the citizens of Arlington.



NEXTSTEPS

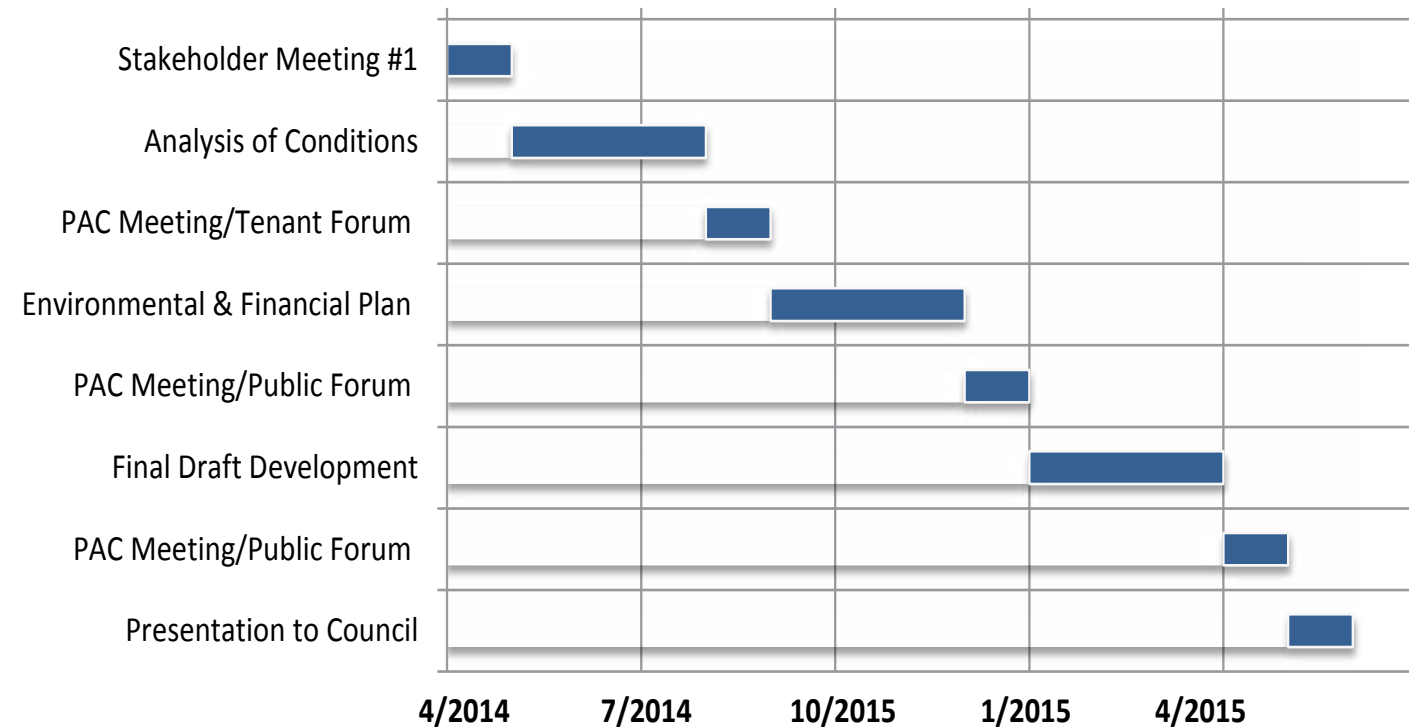
WORK BEGINS ON THE AIRPORT DEVELOPMENT PLAN

The Arlington Municipal Airport is in the process of creating the Airport Development Plan. The Plan has three components: updating the Airport Master Plan, updating the Minimum Standards for Commercial Operation, and updating Airport Rules and Regulations. This Plan will allow for a broader range of planning services, such as updates to Airport governance documents.

Coffman and Associates has been retained for the demand forecasting, environmental review and Airport Layout Plan development. Aviation Management Consulting Group (AMCG) will assist with revisions to the Minimum Standards and the Airport Rules and Regulations. The City has also created a Plan Advisory Committee (PAC), consisting of neighborhood representatives, airport tenants, commercial airport operators, air traffic control tower personnel, TxDOT Aviation, various City departments, and City Council Members. The first meeting was on May 28th. Additionally, a website, www.arlington-tx.gov/airport/airport-development-plan/, was created and will have draft documents available to review and space for residents to provide feedback. Comments can also be provided at <http://arlington.airportstudy.com/comments/>.

Moving forward in the Development Plan process, the PAC will meet again, and the City will host a come-and-go public reception in Fall 2014. Information updates will continue to be posted to the City's website and social media platforms, and postcards will be mailed to neighborhoods adjacent to the airport.

Airport Development Plan Timeline



Quarters are based on calendar year.






CURRENTLY UNDER CONSTRUCTION * Street Improvements in conjunction with a Water/Sewer Renewal or Drainage Project	2014				2015				2016			
	Q1	Q2	Q3	Q4	Q1	Q2	Q3	Q4	Q1	Q2	Q3	Q4
Abram Street (Stadium - SH 360) Reconstruction												
Abram Street (SH 360-City Limits) Reconstruction												
Arbrook/Melear Drainage Reclamation (portion of streets only)*												
Birch Street (McKinney - Woodland) Reclamation*												
Bowen Road Northbound Turn Lane at IH20 Construction												
Bradford Drive (Sherry - Kent) Reconstruction												
Calender Road (Harris - Monthaven) Reconstruction												
Center Street (Arkansas - Timberview) Reconstruction												
Center/IH 20 Bridge (TxDOT Project) Construction												
Curry Road (Winthorp - Blake) Reconstruction												
Blue Forest Drive (Harris - Ledbetter) Reclamation												
Fairfield Subdivision Reclamation*												
Front Street (Pecan - Oak) Parking Lot												
Hollandale Circle (SH 360 - Hardy Place) Reconstruction												
Inwood Drive (Meadow - Southridge) Reclamation*												
Lake Country Drive (Stonebrook - Dead end) Reclamation*												
Lamar Blvd (Collins - Ballpark Way) Reconstruction												
Ledbetter Road (Curry - Russell) Reconstruction												
McKinney Street (Randol Mill - Sanford) Reclamation*												
Napier Drive (Green Oaks - East dead end) Reclamation*												
Pamela Lane (SH 360 - Plaza) Reconstruction												
Parker Heights Subdivision Reclamation*												
Penny Royal Court (West dead end - East dead end) Reclamation*												
Royce Drive (Arkansas - Napier) Reclamation*												
Russell Road (Ledbetter - Calender) Reconstruction												
Sanford Street (McKinney - Orange) Reclamation*												
San Ramon Village Reconstruction												
S. Cooper/Mayfield Road Intersection - Adding Turn Lanes												
S. Cooper/Green Oaks Intersection - Adding Turn Lanes												
Southridge Drive (Inwood - Tucker) Reclamation*												
Spring Meadows Subdivision Reclamation*												
Stonebrook Drive (Lamar - Lake Country) Reclamation*												
Summit Street (Abram - Fourth St) Reclamation*												
Thousand Oaks Subdivision Reclamation*												
Truver Lane (Green Mere - North dead end) Reclamation												
Wright Street (McKinney - Forest) Reclamation*												

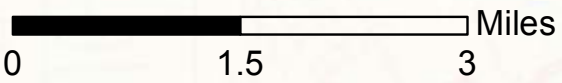
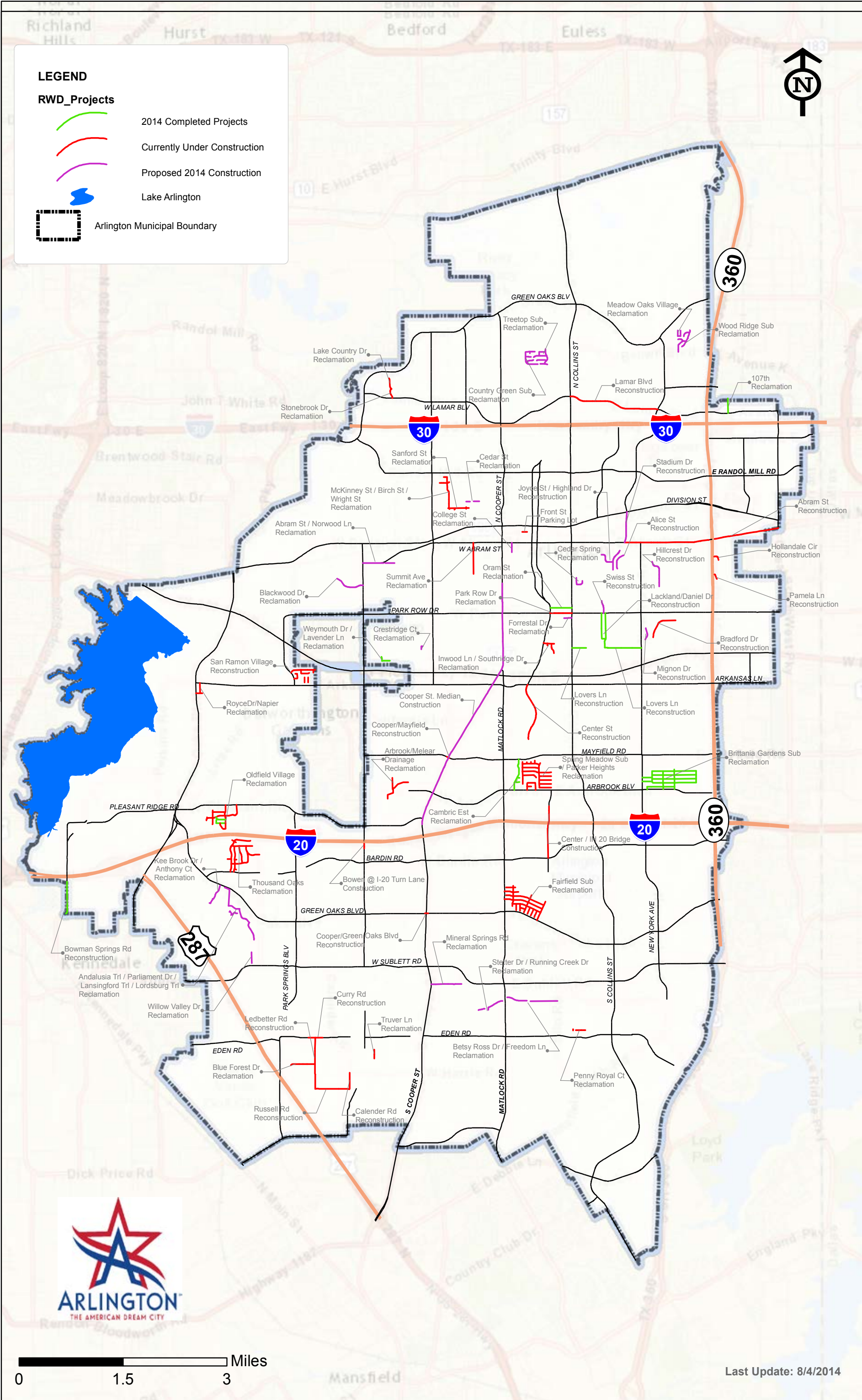
Quarters are based on calendar year.

IN THE WORKS Design Phase Right-of-way Phase Construction Phase (includes franchised utility relocation) * Street Improvements in conjunction with a Water/Sewer Renewal or Drainage Project Gap between phases is due to availability of funding, which is contingent upon approval of future Capital Budget and Bond Sale.	2014				2015				2016			
	Q1	Q2	Q3	Q4	Q1	Q2	Q3	Q4	Q1	Q2	Q3	Q4
2014 Residential Rebuilds												
Abram Street (Cooper - Collins) Reconstruction												
Abram Street (Collins - Stadium) Reconstruction												
Arbor Valley Drive (2701 Shelterwood - Perkins) Reclamation*												
Countryside Subdivision Reclamation*												
Earle Street (Perkins - Highgate) Reclamation*												
Fielder Road (709 Fielder - 1300' south of Sandford) Reclamation*												
Gary Lane (Perkins - Klinger) Reclamation*												
Great Southwest Parkway (Avenue E - Abram) Reconstruction												
Greenleaf Subdivision Reclamation*												
Hollandale East Subdivision Reclamation*												
Jason Drive (Quail - Little) Reclamation*												
Klinger Road (Gary - 5806 Klinger) Reclamation*												
Lakewood Drive (Treatment Plant - Woodland Park) Reclamation*												
Landover Hills Lane (East cul-de-sac - Independence) Reclamation*												
Matthews Court (801 Matthews - 705 Matthews) Reclamation*												
Monticello Court (Windsor - North dead end) Reclamation*												
New York Ave (Park Row - Arkansas) Reconstruction												
Oakbrook Subdivision Reclamation*												
Quail Lane (Green Oaks - Jason) Reclamation*												
Perkins Road (Arbor Valley - Gary) Reclamation*												
Western Plain Subdivision Reclamation*												
Wolff Drive (Lucas - South dead end) Reclamation*												
Woodland Park Blvd (Lakewood - Green Oaks) Reclamation*												

LEGEND

RWD_Projects

-  2014 Completed Projects
-  Currently Under Construction
-  Proposed 2014 Construction
-  Lake Arlington
-  Arlington Municipal Boundary



Last Update: 8/4/2014

Quarters are based on calendar year.

PROPOSED 2014 CONSTRUCTION	2014				2015				2016			
	Q1	Q2	Q3	Q4	Q1	Q2	Q3	Q4	Q1	Q2	Q3	Q4
Design Phase												
Right-of-way Phase												
Construction Phase (includes franchised utility relocation)												
* Street Improvements in conjunction with a Water/Sewer Renewal or Drainage												
Abram Street (Bowen - Norwood Place) Reclamation*												
Alice Street (Browning - Sharon) Reconstruction												
Andalusia Trail (Parliament - Lansingford) Reclamation*												
Antony Court (Kee Brook - Andalusia) Reclamation*												
Betsy Ross Drive (Cul-de-sac - Silo) Reclamation *												
Blackwood Drive (Bowen - Norwood) Reclamation*												
Cedar Street (Davis - East end) Reclamation*												
Cedar Street (West end - Magnolia) Reclamation*												
College Street (Abram - UTA Blvd) Reclamation*												
Cooper Street (Pleasant Place - Mitchell) Sidewalks & Median												
Crestridge Court (East end - Tucker) Reclamation*												
Forrestal Drive (Meadow - Collins) Reclamation*												
Freedom Lane (Liberty - Pilgrim) Reclamation*												
Highland Drive (Sharon - Ruth) Reconstruction												
Hillcrest Drive (Glenhaven - Brookshire) Reconstruction												
Joyce Street (Meadowbrook - Highland) Reconstruction												
Kee Brook Drive (Green Oaks - Antony Ct) Reclamation*												
Lansingford Trail (Andalusia - Lordsburg) Reclamation*												
Lordsburg Trail (Lansingford - cul-de-sac) Reclamation*												
Mignon Drive (South dead end - Pavement Change) Reconstruction												
Norwood Ln (West end - 2030 Norwood Lane) Reclamation*												
Parliament Drive (Green Oaks - Andalusia) Reclamation*												
Running Creek Dr (Xavier - Alcott) Reclamation *												
Stadium Drive (Division - Abram) Reconstruction												
Stetter Dr (6500 Setter Dr - Hyden) Reclamation*												
Swiss Street (Moore - Park Row) Reconstruction												
Willow Valley Drive (North dead end - Willow Crest) Reclamation*												

Quarters are based on calendar year.

2014 COMPLETED PROJECTS	2013				2014				2015			
	Q1	Q2	Q3	Q4	Q1	Q2	Q3	Q4	Q1	Q2	Q3	Q4
* Street Improvements in conjunction with a Water/Sewer Renewal or Drainage Project												
Bowman Springs Road (IH 20 - South City Limits) Reconstruction												
Britannia Gardens Subdivision Reclamation*												
Daniel Drive (Park Row - Lovers) Reconstruction												
Lackland Street (Park Row - Daniel) Reconstruction												
Lavender Lane (Weymouth Ct - Winewood) Reclamation*												
Lovers Lane (Daniel - New York) Reconstruction												
Lovers Lane (Collins - Wynn Terr) Reconstruction												
Weymouth Ct (Lavender - North dead end) Reclamation*												

Quarters are based on calendar year.

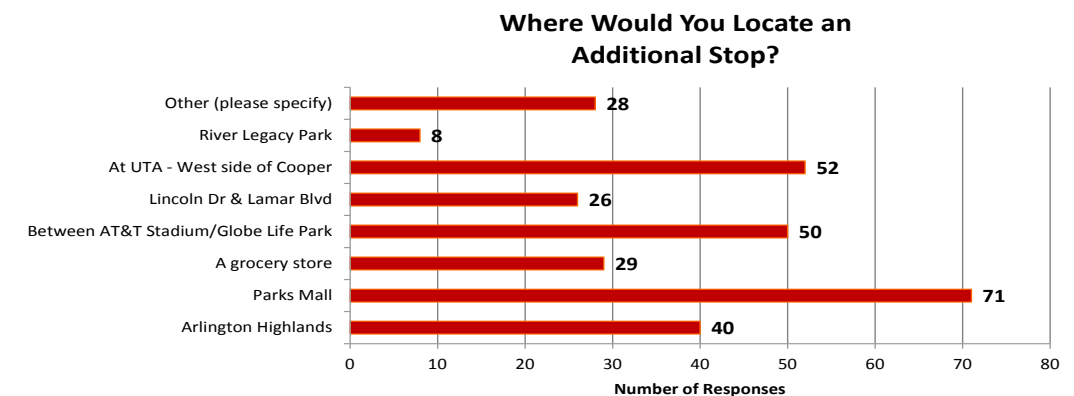
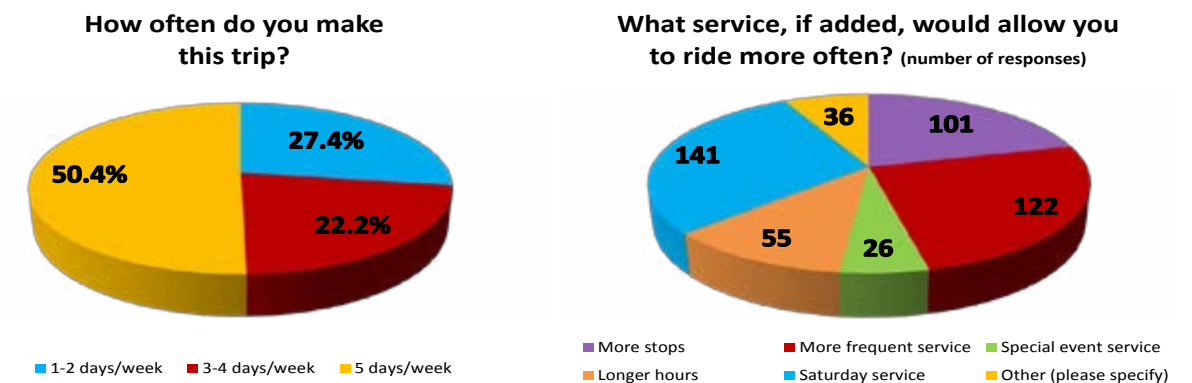
2014 STREET MAINTENANCE PROJECTS	2014			
	Q1	Q2	Q3	Q4
No design or right-of-way are required for the annual street maintenance projects. Schedule is tentative and subject to change upon award of contract.				
** Street Reclamation				
Proposed				
Under Construction				
Completed				
107th Street (Ave H - North City Limits)**				
Cambric Estates**				
Cedar Springs Terrace (Mitchell - Mitchell)**				
Country Green Subdivision**				
Meadow Oaks Village Subdivision**				
Mineral Springs Road (Cooper - Tempest)**				
Oldfield Village Subdivision**				
Oram Street (Center - Collins)**				
Park Row Drive (Center - Collins)**				
Treetop Subdivision **				
Wood Ridge Subdivision**				

METRO ARLINGTONXPRESS (MAX) RIDER SURVEY

In April 2014, the City conducted a survey in an effort to learn more about who is riding the MAX. 258 riders participated in the survey, which asked questions about the rider's specific trips that day, as well as their overall satisfaction with the MAX service. The average satisfaction rating for the MAX was 5.24 on a scale of 6.

The survey also asked about potential expansion of the MAX. More than half of the survey-takers said they would like to see Saturday service added. When asked where they would like to see an additional stop, most responses received were for a stop at the Parks Mall.

For detailed schedule information, trip ideas, and frequently asked questions, visit www.RideTheMAX.com.



CITY COUNCIL CALLS BOND ELECTION NOVEMBER 2014

On August 12, the City Council called an election for a five-year \$236 million bond package that will go to voters in November this year. Included in the package are four propositions: Public Works and Transportation, Parks and Recreation, Fire, and Libraries. The bond package includes over \$160 million for street and related improvements throughout the City.

The election will be held on November 4, 2014. Voters will vote for or against each proposition separately. Early voting will take place October 20-31. For more information on the 2014 bond election, visit www.arlingtontx.gov.

HIGHLIGHTS

NEW BIKE FACILITIES IN ARLINGTON

Bicycle facilities make traveling easier and safer for motorists and cyclists on the road. In Arlington, two of the most common facilities are bike lanes and bike routes. Bike lanes are separate lanes designated for cyclists, usually marked with a painted stripe and on-road signage. Bike routes are marked by on-street "sharrow" symbols and roadside signage, and allow cyclists and motorists to share the same road space. Where bicycle facilities are located - and what type are guided by the City's Hike and Bike System Master Plan, which the City adopted in 2011.

In 2001, the City of Arlington received a federal grant to complete on-street bicycle facilities throughout the City. A portion of the funds were used in 2006 to install bike lanes on Calender Road and Center Street. This summer, the remaining funds will be used to stripe bike lanes and add signage to several streets surrounding downtown Arlington, including portions of UTA Boulevard, Mitchell Street, and S. Pecan Street. Bike lanes will also be striped on a portion of Lincoln Drive, and bike route markings and signage will be added on Center Street, Mesquite Street, and E. Lovers Lane.

Design of the street improvements have been reviewed and approved by the Texas Department of Transportation. Construction is expected to begin late summer 2014.



"Sharrows" and signage, like these on E. Lovers Lane, remind bicyclists and motorists to share the road space with each other



Bike lanes, like those shown in this rendering, include striping that designates part of the road space for cyclists

"Enhancing Regional Mobility" is a priority of the Arlington City Council. Our central location within the region makes improving the efficiency and effectiveness of Arlington's transportation connections within and beyond our borders critical. Our community is at the crossroads.

